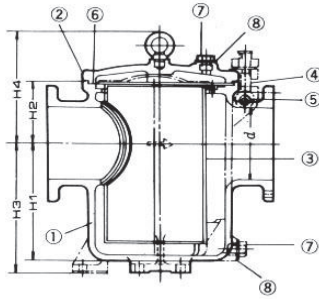
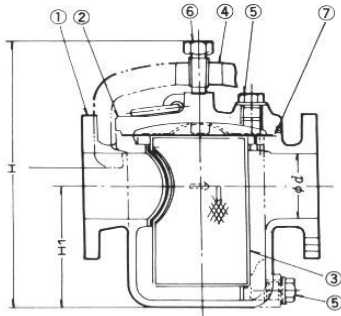


Marine Can Water Filters

JIS F 7121

Nominal Dia. 25~100

Nominal Dia. 125~400



WORKING PRESSURE	2kg/cm ²
TEST PRESSURE	3kg/cm ²

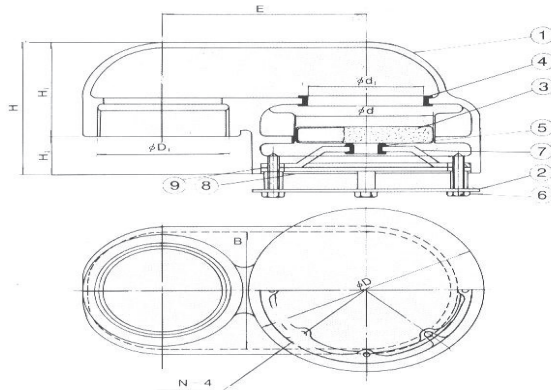
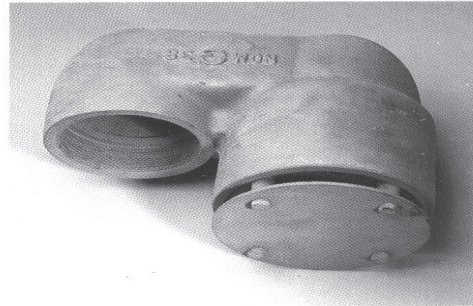
Dimensions

Unit : mm

SIZE	40	50	65	80	100	125	150	200	225	250	300	350	400
d	40	50	65	80	100	125	150	200	225	250	300	350	400
L	190	200	250	270	320	400	460	550	600	680	760	820	880
a	7	8	9	9	10	12	13	15	16	17	18	19	20
H ₁	85	100	135	152	185	235	290	350	385	450	515	575	645
H ₂	213	238	304	336	400	482	573	661	732	824	917	1026	1131
P						260	310	380	420	480	540	590	650
P ₁						80	90	100	120	140	160	180	200
Weight	8.4	10.3	18.5	24	35.6	62	89	141	178	246	321	428	518

NO	PARTS	MATERIAL
1	BODY	CAST IRON
2	COVER	CAST IRON
3	FILTER CYLINDER	ROLLED STEEL
4	GLAND	ROLLED STEEL
5	FILTER CYLINDER	ROLLED STEEL
6	RING	BRASS STEEL
7	HANDLE	CARBON STEEL
8	YOKE OF BOLT	BRONZE STEEL
9	DRAIN PLUG	STAINLESS STEEL
10	SET SCREW	ASBESTOS
11	GASKET	ASBESTOS
12	FILTER CYLINDER	ROLLED STEEL
13	DRAIN PLUG	ROLLED STEEL
14	GASKET	ASBESTOS
15	FILTER CYLINDER	ROLLED STEEL

GOOSE NECK "A" TYPE AIR VENT HEAD



PART NO	MATERIAL
1	CAST IRON
2	SS 41
3	SUS 304
4	N. B. R
5	N. B. R
6	SS 41
7	SS 41
8	CAST IRON
9	SUS 304

DIMENSION TABLE

N. D	H	H ₁	H ₂	E	B	φ d	φ d ₁	φ D	φ D ₁	Approx. Weight(kg)
50A	135	76	59	93	61	63	53	102	PT 2"	7.6
65A	146	89	57	108	76	78	68	117	PT 2½"	8.0
80A	150	96	54	120	89	86	76	129	PT 3"	10.5
100A	181	120	61	160	114	114	100	177	PT 4"	15
125A	200	144	56	184	140	138	125	203	PT 5"	20
150A	233	171	62	218	165	166	150	240	PT 6"	22